



**ET-SERIES (Mid Range)
ENVIRONMENTAL TEST
CHAMBERS**

ENVISYS[®]
reimagining the environment

TEST CHAMBER DESIGNED WITH USER IN MIND...

Uncompromised features included at no additional add-on costs...

ET-Series Environmental Test Chambers are designed with uncompromised features included in the system to meet your changing application needs of simulation of wide range of temperature, relative humidity etc., conditions without the added cost of expensive add-on's as options. Available in varied volumes to fit your differing specimen sizes

- ▶▶ Block construction with easy reach-in maintenance sections and user-friendly control desk
- ▶▶ Designed to meet variety of testing applications on diverse sizes of testing specimens



Heavy Duty Castor wheels with Level Adjusters



Cable Ports with silicone plug



Heavy Duty Di-Casted Hinges



LED Illuminated Work-Space

LED illuminated work-space with multi-pane vacuumized glass view window and de-fog heaters
High grade SS interiors & CRCS powder coated panels with durable SS shelving and height adjustable tray channels
Silicone rubber double layered sealing and heavy duty di-casted aluminium locks and hinges
Thru-wall access ports on either side with flexible plugs for cable run-thru
Easy access door handle cum HMI mount-front access operating monitor

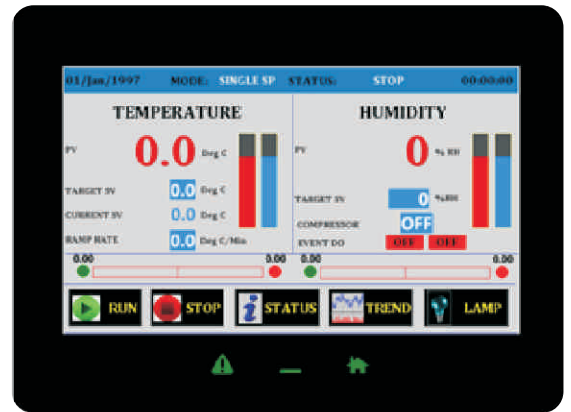
STANDARD MODELS

Standard Volumes	150, 300, 600, 950 and 1400 Litres
Temperature	-40/-70°C to 180 °C \pm 1 °C
Relative Humidity	10% to 95% \pm 3%

EVERYTHING YOU NEED IN A TEST CHAMBER...



ET-touch Programmer



FEATURES

- Colour touch programmer with built-in web server that allows remote monitoring and operation of your chamber from any internet connected PC or smart phone
- Communication ports viz., RS-232, RS-485, USB, Ethernet and USB host port
- Onboard 256 MB user memory and extender SD card up to 2 GB memory for data and program storage
- Direct real time trend capture and storage provision on the controller
- Total programming capability up to 99 programs
- 3 User programmable soft keys with LED indication for pre-assigned functions
- Test data storage of individual file and folder wrt time
- Graphical programming for faster programming and program view
- Real time trend available with user scaling
- On demand auto tuning
- Three level security for different user access

OTHER VARIETIES

EM-SERIES MINI Environmental Chamber



FLOOR MODEL

DESK MODEL

EWS-SERIES WALK-IN Environmental Chamber



SINGLE BLOCK

PRE-FABRICATED

ENVISYS ET-SERIES ENVIRONMENTAL TEST CHAMBER MODELS

Temperature	ET150-40T/70T	ET300-40T/70T	ET600-40T/70T	ET950-40T/70T	ET1400-40T/70T	ET3000-40T/70T
Temperature & Humidity	ET150-40H/70H	ET300-40H/70H	ET600-40H/70H	ET950-40H/70H	ET1400-40H/70H	ET3000-40H/70H
Working Volume	150 liters (5 cu.ft)	300 liters (10 cu.ft)	600 liters (21 cu.ft)	950 liters (33 cu.ft)	1400 liters (52 cu.ft)	3000 liters (106 cu.ft)
Performance						
Temperature Range	-40°C to 180 °C and -70°C to 180 °C (-40 deg F to 356 deg F and -94 deg F to 356 deg F)					
Temperature Fluctuation	0.5 deg C (Up to 150 deg C)			0.8 deg C (Up to 150 deg C)	1 deg C (Up to 150 deg C)	1 deg C (Up to 150 deg C)
Temperature Gradient	0.8 deg C (Up to 150 deg C)			1 deg C (Up to 150 deg C)	1.5 deg C (Up to 150 deg C)	1.5 deg C (Up to 150 deg C)
Temperature Heating Rate*	5 K /min.	5 K / min.	5 K /min	5 K /min	5 K /min	5 K /min
Temperature Cooling Rate*	3.5 K /min.	2.5 K / min.	3.5 K /min	2.5 K /min	2 K /min	2 K /min
Humidity Range	10%RH to 98%RH					
Humidity Fluctuation	3% RH	3% RH	3% RH	3% RH	3% RH	3% RH
Humidity Gradient	3% RH	3% RH	3% RH	5% RH	5% RH	5% RH
Dimensions						
Interior dimensions	W 550mm (21")	W 650mm (25")	W 800mm (31")	W 1000mm (39")	W 1100mm (43")	W 1300mm (51")
	D 400mm (16")	D 600mm (24")	D 850mm (33")	D 1000mm (39")	D 1350mm (53")	D 1500mm (59")
	H 700mm (27")	H 800mm (31")	H 900mm (35")	H 950mm (37")	H 950mm (37")	H 1500mm (59")
Exterior dimensions***	W 800mm (31")	W 900mm (35")	W 1050mm (41")	W 1250mm (49")	W 1350mm (53")	W 1550mm (61")
	D 1500mm (59")	D 1700mm (67")	D 1950mm (77")	D 2100mm (83")	D 2450mm (96")	D 3100mm (122")
	H 1875mm (74")	H 1975mm (78")	H 2075mm (82")	H 2125mm (84")	H 2125mm (84")	H 1750mm (69")
Installation Site Requirements						
Power Supply Requirement	400-415VAC +/- 5 % 3 Phase 50/60Hz 4-wire and Earth.					
	Optionally Available Voltage (VAC) and Frequency (Hz) Depending on the Country/Installation Site					
Connected Load (Max)	4/6 kw	4/6 kw	6/9 kw	6/9 kw	9/13 kw	15/20 kw
	5/7 kw	5/7 kw	7/10 kw	7/10 kw	10/15 kw	19/24 kw
Chamber Drain	1/2" BSP Female Threaded provision (Gravity Drain)					
Water Supply	Continues Demineralized/Deionised water supply connection 0.5 to 4 Kg/cm2.					
Max Water Consumption	12 Litres (3US Gallon)/ Day	16 Litres (4 US Gallon)/ Day	20 Litres (5 US Gallon)/ Day	24 Litres (6 US Gallon)/ Day	28 Litres (7 US Gallon)/ Day	32 Litres (8 US Gallon)/ Day
Condenser	Standard: Air-cooled condenser Optional: Water-cooled condenser					Water cooled condenser
Max Noise Level (dba) **	70-72	70-72	70-72	70-72	72-75	75-78
Ambient Condition*	15 deg C to 25 deg C and 10%RH to 90%RH for air cooled systems (Condensation Free)					
* According to IEC-60068-3-5 and IEC-60068-3-6 (Empty Chamber) @ 25 deg C Ambient Room and 50 Hz Power. with rated power supply condition with out tolerance.						
** Measured @ 1 meter distance in a non revebreating room for air cooled system for water cooled systems will reduce 4-5 dba from the specified value.						
*** External dimensions are with out external projections like controller, Hinges, lock and other accessories.						

After sale service is an integral part of our business: Our services include complete technical and engineering support to our customers round the clock, repair, maintenance, refurbishments, spare parts etc.



ENVISYS TECHNOLOGIES PVT LTD

ISO 9001-2015 Certified Company

#SB-118, 3rd Cross Road, I-Stage, Peenya Industrial Estate, Bengaluru – Karnataka – INDIA

Land Phone : +91 80 28377888 Fax : +91 80 28372927

E-mail : help@envisystech.com Website : www.envisystech.com